

St. Peter's Primary School

NEW SCHOOL PROPOSAL



St. Peter's Primary School

NEW SCHOOL PROPOSAL

June 2021

Hamilton Architects

Address: Hamilton Architects, Hamilton House, 3 Joy Street, Belfast, BT2 8LE

Email: design@hamiltonarchitects.co.uk

Website: www.hamiltonarchitects.co.uk

St. Peter's Primary School

Address: 90 College Lands Rd, Charlemont, BT71 6SW

Website: www.stpeterscollegeland.com

St. Peter's Primary School, Charlemont, Co Armagh
Public Consultation – June 2021



INTRODUCTION



There is a deep recognition that St. Peter's PS is anchored to its rural location and community. The design attempts to capture this connection between the people and the land and reflect its rural identity through the use of materials typically found within the rural landscape.



Inspiration was taken for the design from the many poems written by the former student Paul Muldoon which explore this relationship between the people and the land.

The 5-classroom school will reinterpret the rural vernacular with sloped roofs and simple geometries, and basic materials. Materials are austere but durable, aimed not only at reducing maintenance costs, but at giving the building a longer life becoming a key factor for economic and environmental feasibility. Even though other materials may be less expensive to use, we are not solely concerned with construction costs, but how materials perform through time and how easy it is to maintain them.



The site was organized as a series of thresholds delineating public, semi-public, and private spaces in order to easily read and navigate both for pupils and visitors. It is hoped that this new building will function not only as a school, but then be a great asset for the local community and their activities.

Except from Misfits, Paul Muldoon

If and when I did look up, the sky over the Moy was the very
same gray-blue as the slow lift
of steam-smoke over the seam
of manure on a mid-winter morning.
I noticed the splash of red lead
on my left boot as again and again I would bend
my knee and bury my head in the rich
black earth the way an ostrich
was rumored to bury its head. My hands were blue
with cold. Again and again I would bend
to my left and lift
by one handle a creel of potatoes - King Edwards, gray as lead -
mined from what would surely seem
to any nine- or ten-year-old an inexhaustible seam.

St. Peter's Primary School, Charlemont, Co Armagh
Public Consultation – June 2021





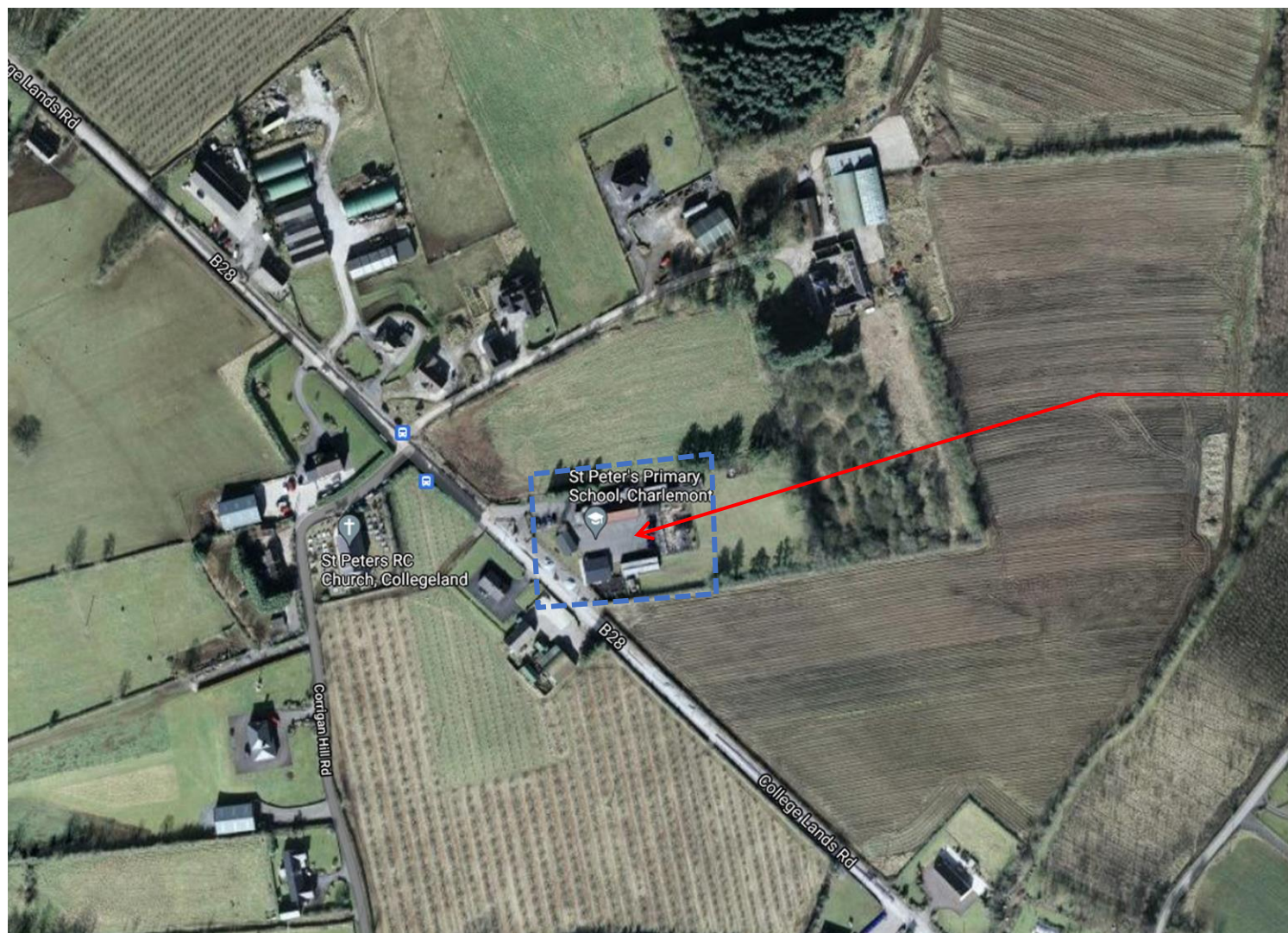
THE NEW SCHOOL BUILDING

- Create a modern and inspiring environment for the pupils of St. Peter's Primary School
- Purpose built for 155 pupils with approx. 1925m² of accommodation
- Provide 5 classrooms and associated facilities
- Incorporating the latest technologies

St. Peter's Primary School, Charlemont, Co Armagh
Public Consultation – June 2021



SITE



EXISTING SITE

Existing School Buildings

St. Peter's Primary School, Charlemont, Co Armagh
Public Consultation – June 2021

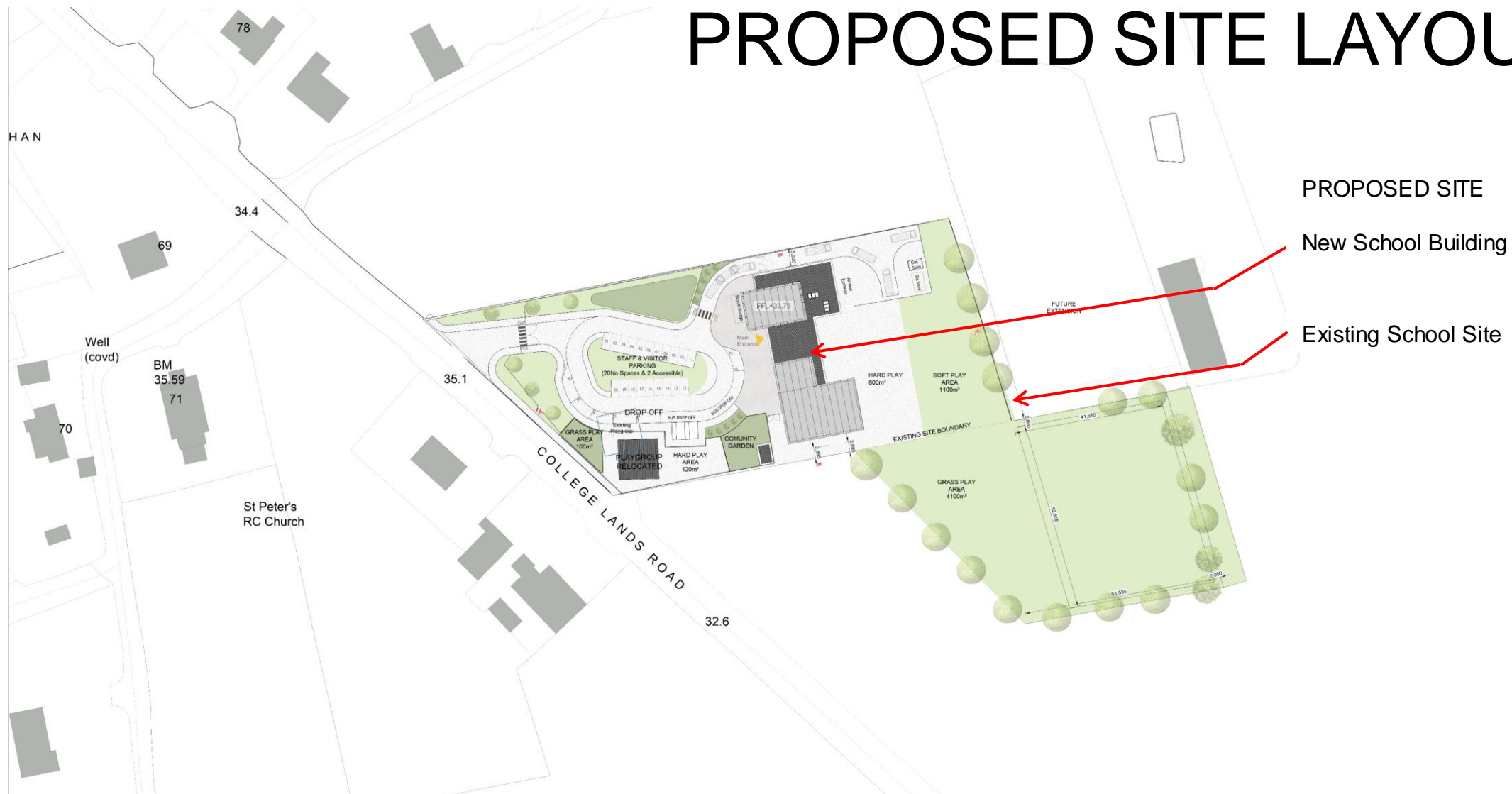




St. Peter's Primary School, Charlemont, Co Armagh
Public Consultation – June 2021



PROPOSED SITE LAYOUT



St. Peter's Primary School, Charlemont, Co Armagh
Public Consultation – June 2021



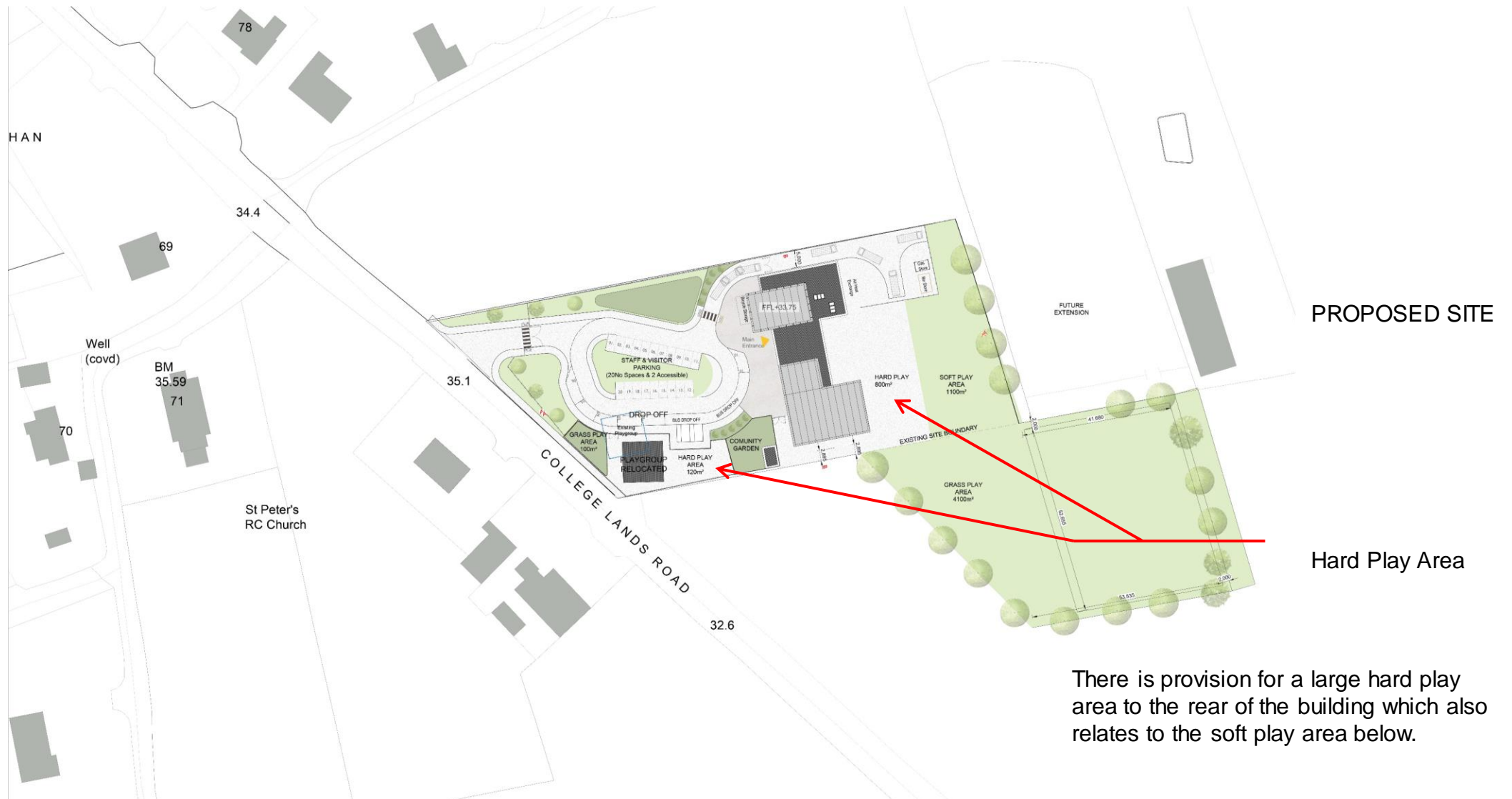
Access to the school will remain at its current location, however, a larger parking and drop area will be formed. This will address the ongoing issues of safety during school drop of times along the Collegelands Rd. The proposal will form a clear delineation between pedestrian and vehicular routes.





St. Peter's Primary School, Charlemont, Co Armagh
Public Consultation – June 2021

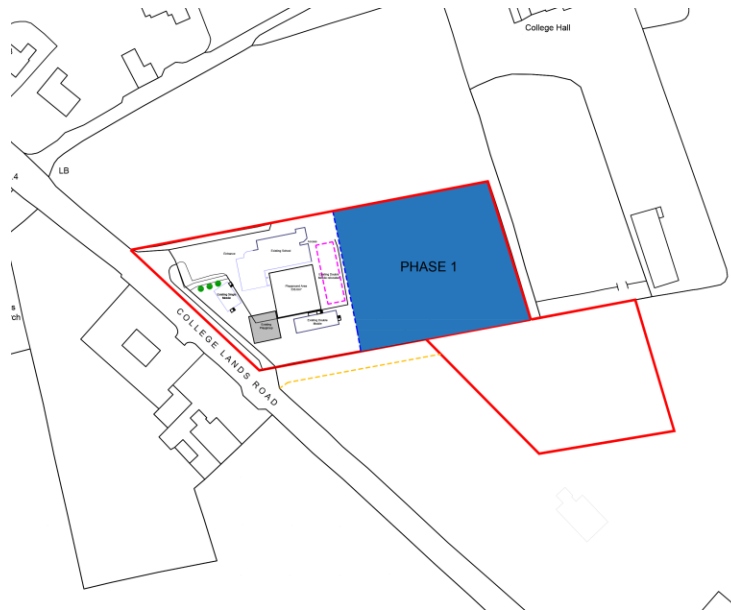




There is provision for a large hard play area to the rear of the building which also relates to the soft play area below.

Proposed Construction Phases

Phase 1



Phase 2



Phase 3



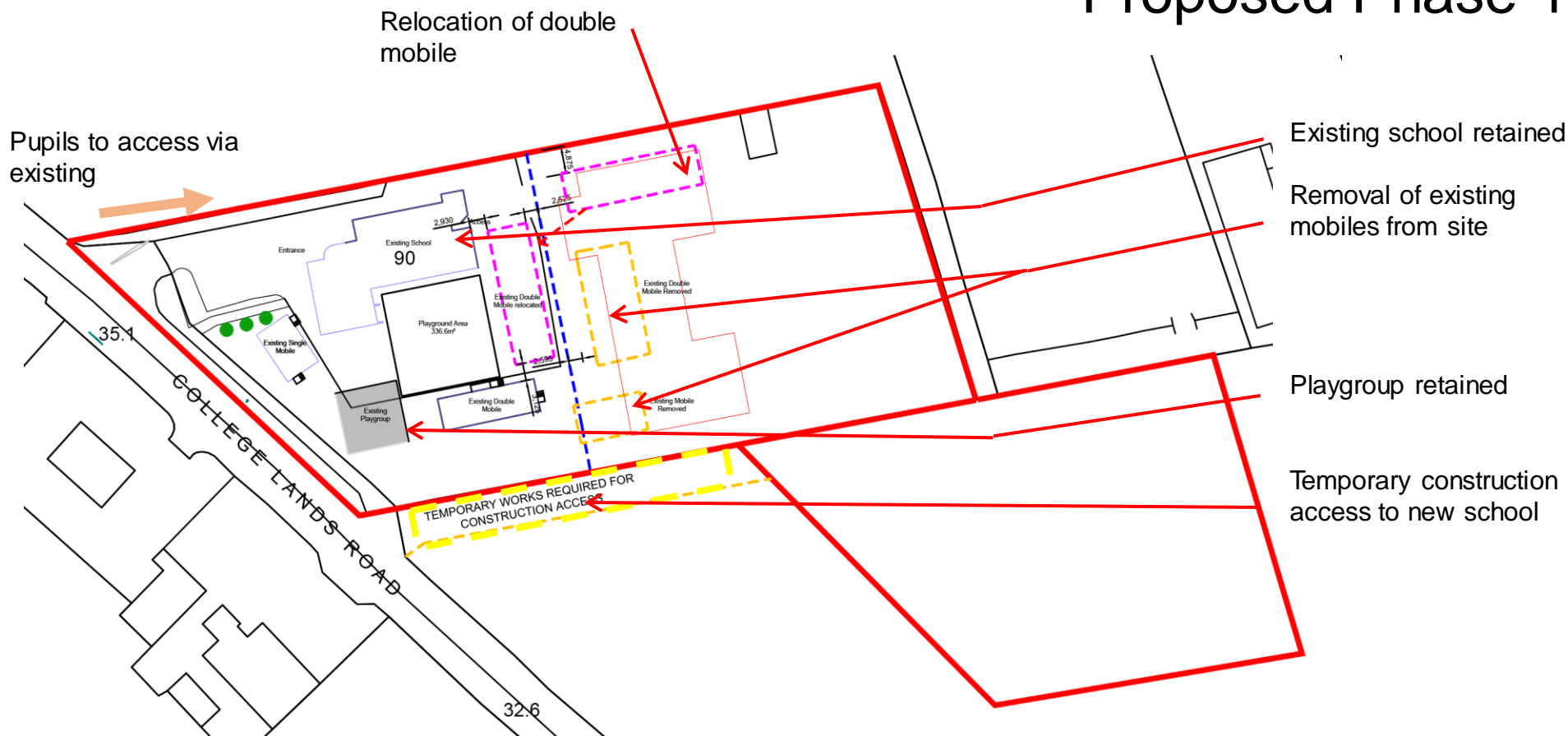
As the new school will need to be constructed while providing the continued function of the existing school a 3 phased plan will be implemented.



Example of Construction Site Boarding

The location of the new school was determined in response to need to retain the front portion of the site for the continued operation of the school during construction.

This involves the removal and relocation of many of the existing mobiles as illustrated.



Proposed Phase 1

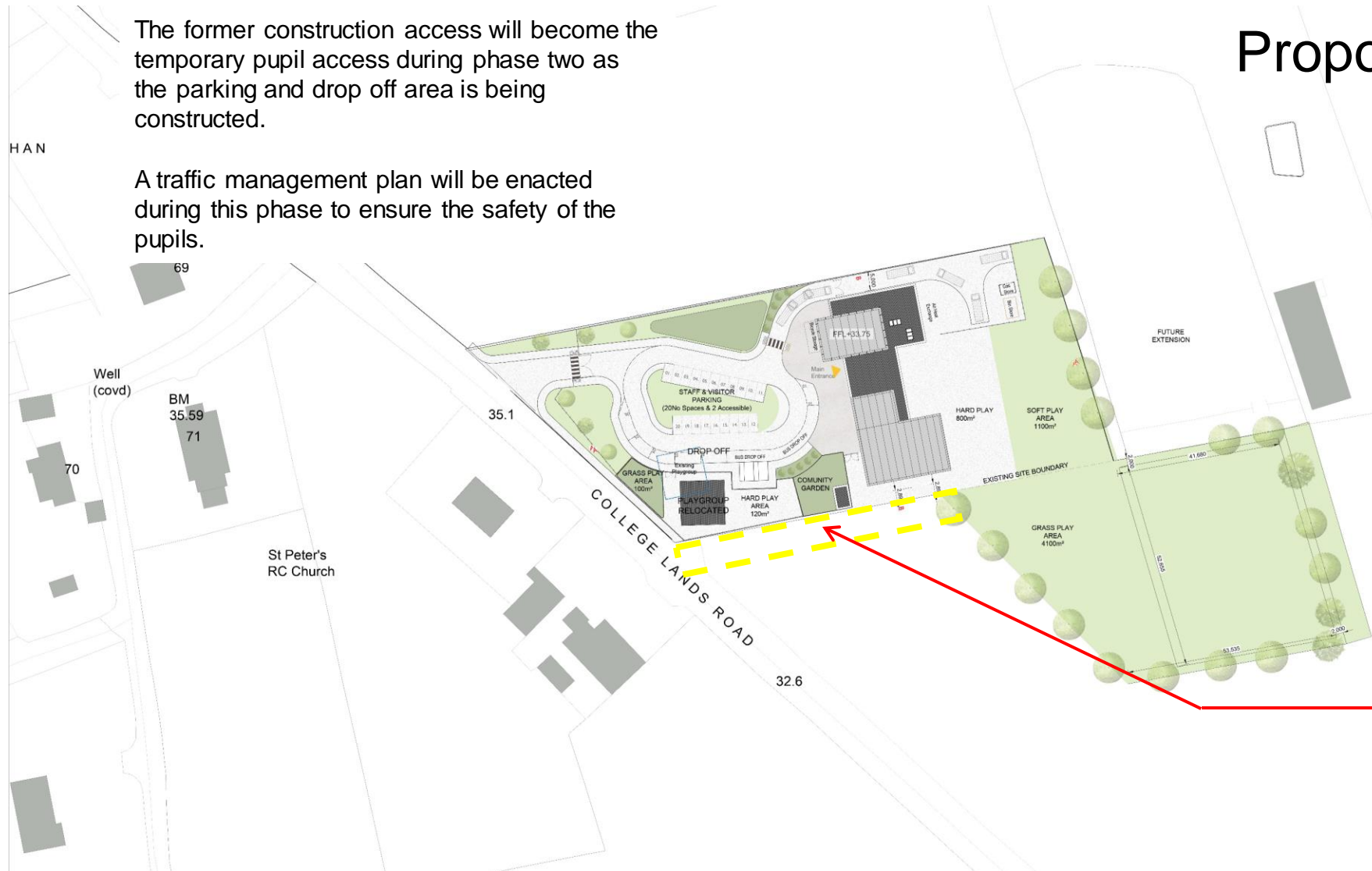
Proposed Phase 2

The former construction access will become the temporary pupil access during phase two as the parking and drop off area is being constructed.

A traffic management plan will be enacted during this phase to ensure the safety of the pupils.

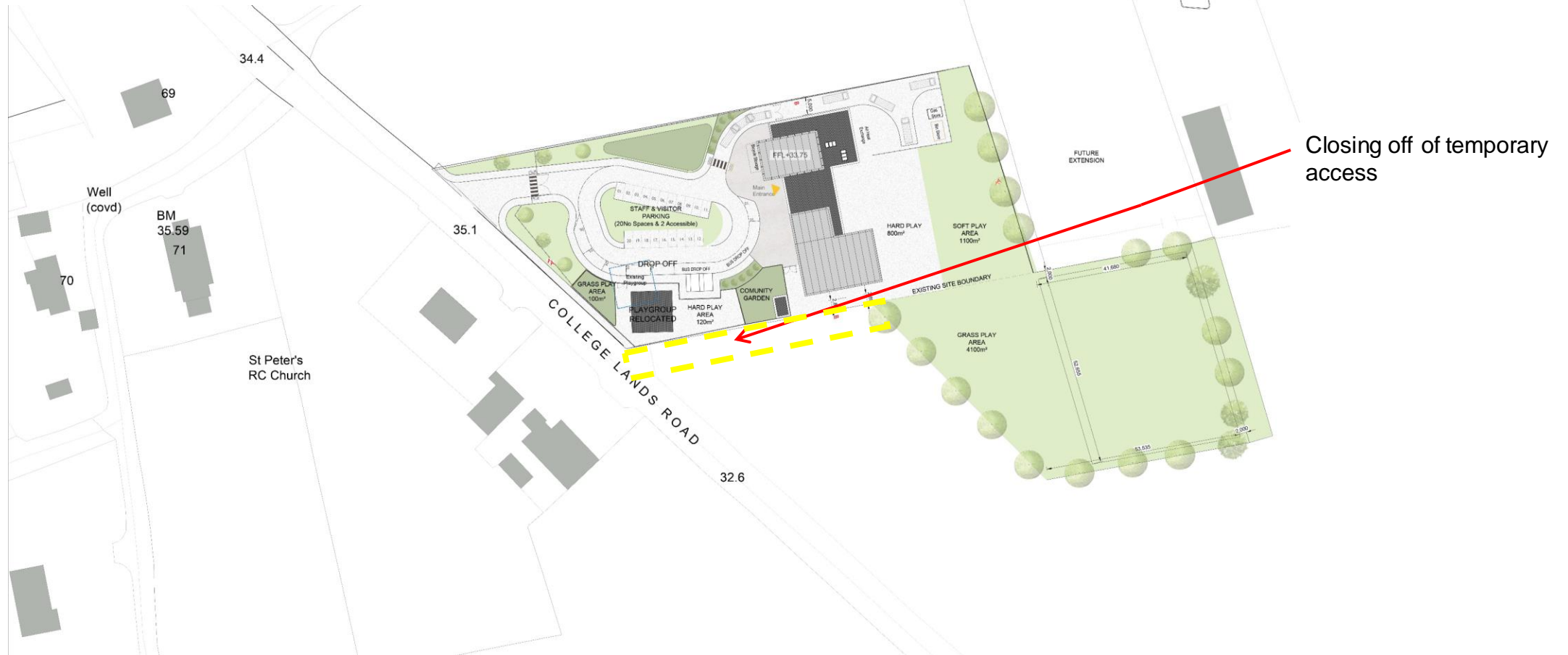
Ideally to be undertaken during summer months

Temporary pupil access to new school during construction phase 2



Phase 3 involves the removal of the contractor's compound and the creation of the grass play area, associated buffer planting and closing and making good of the temporary access.

Proposed Phase 3



St. Peter's Primary School, Charlemont, Co Armagh
Public Consultation – June 2021



PROPOSED FLOOR PLANS



GROUND FLOOR PLAN



FIRST FLOOR PLAN

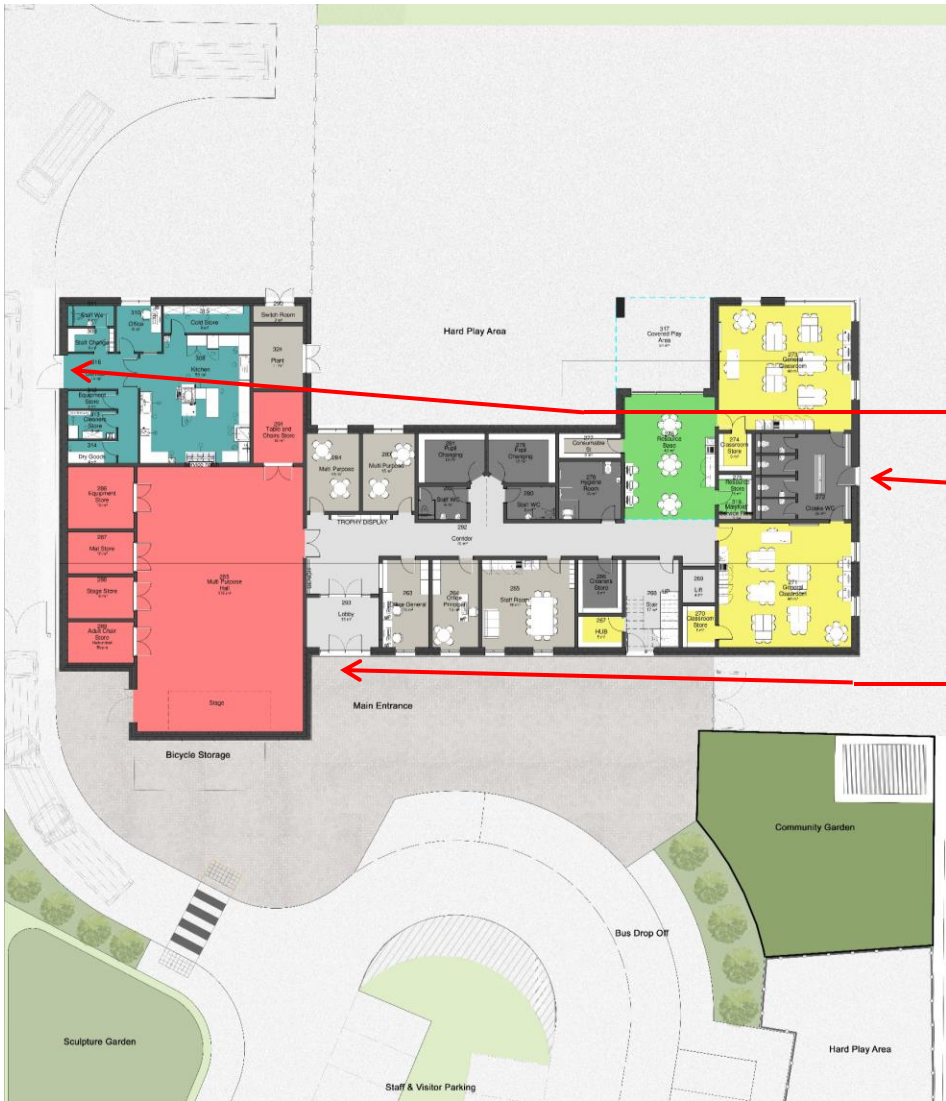
By Department Legend

- Administration
- Ancillary
- Circulation
- Classroom
- Kitchen
- Multi Purpose Hall
- Resource Area

St. Peter's Primary School, Charlemont, Co Armagh
Public Consultation – June 2021



GROUND FLOOR PLAN



Service Entrance

Pupil Entrance from Hard Play Area

Main Entrance

St. Peter's Primary School, Charlemont, Co Armagh
Public Consultation – June 2021



GROUND FLOOR PLAN



School Meals Area /
Multi Purpose Hall

St. Peter's Primary School, Charlemont, Co Armagh
Public Consultation – June 2021





Classrooms

St. Peter's Primary School, Charlemont, Co Armagh
Public Consultation – June 2021



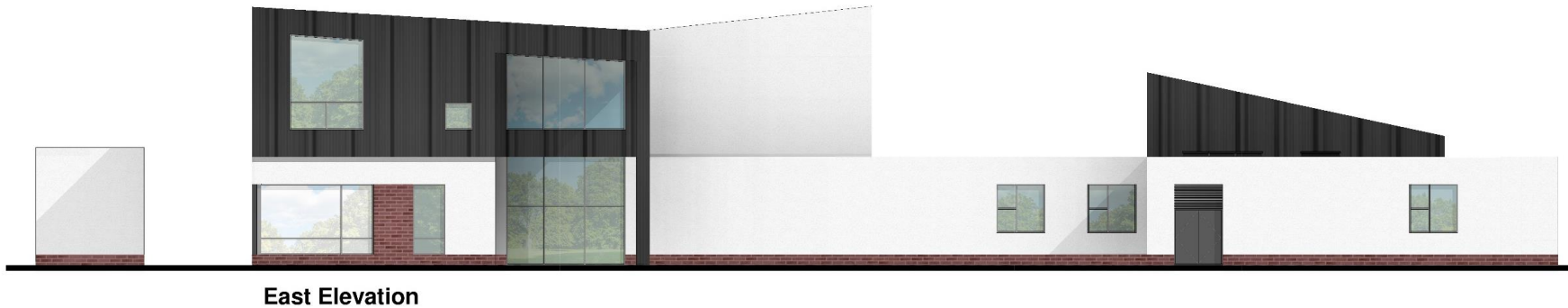


Resource Areas

St. Peter's Primary School, Charlemont, Co Armagh
Public Consultation – June 2021



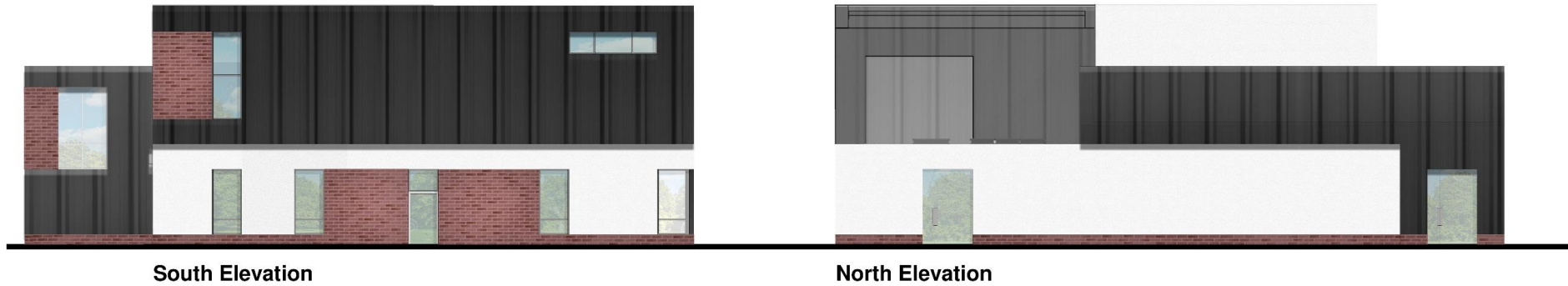
Elevations



St. Peter's Primary School, Charlemont, Co Armagh
Public Consultation – June 2021



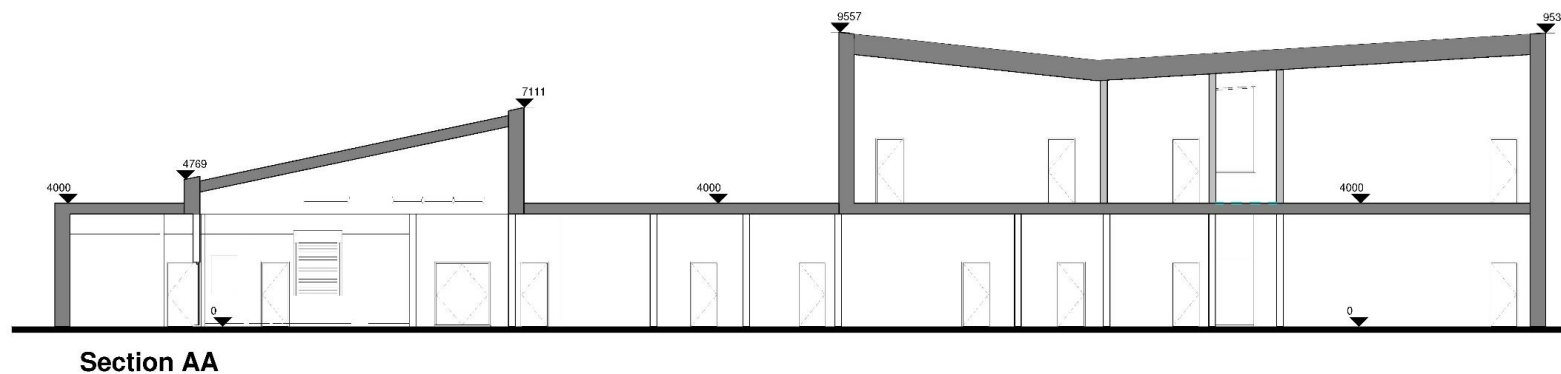
Elevations



St. Peter's Primary School, Charlemont, Co Armagh
Public Consultation – June 2021



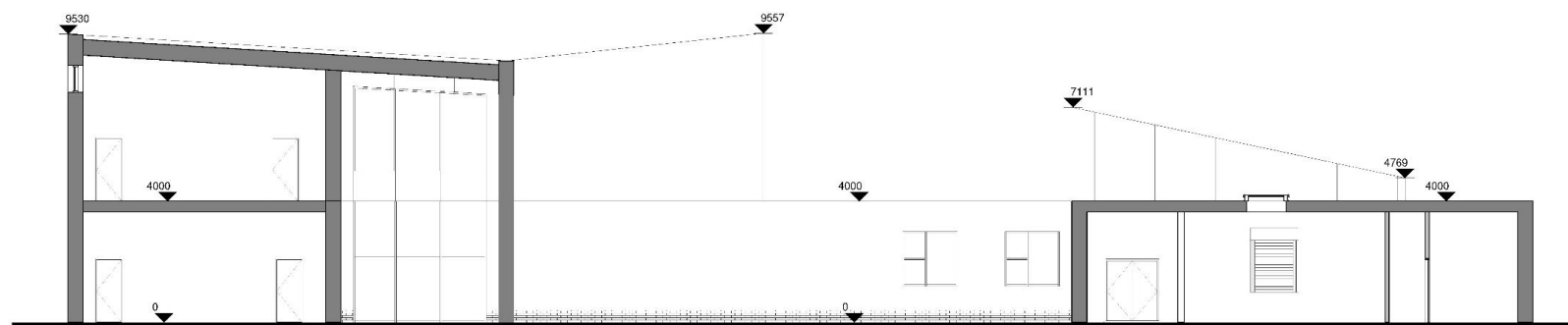
Section



St. Peter's Primary School, Charlemont, Co Armagh
Public Consultation – June 2021



Section



Section BB

St. Peter's Primary School, Charlemont, Co Armagh
Public Consultation – June 2021





Perspective View of Main Entrance

St. Peter's Primary School, Charlemont, Co Armagh
Public Consultation – June 2021





Perspective View of Rear

St. Peter's Primary School, Charlemont, Co Armagh
Public Consultation – June 2021

